

e-SILO

SOLUTIONS REVIEW #7

IN THIS ISSUE:

ARTEMIS RENOVATION

Artemis gets new packaging and a face lift

SPATIAL IMAGING

The Artemis laser imaging system

ART SOFTWARE

A closer look at our ART software functionality

THE doughLAB

Maintaining standards in times of high price and demand

RONIN PFS

News on the Trimble repair facility

RONIN IS

Let us be your cargo solution

THE IMPORTANCE OF QUALITY

A short guide to Lucerne quality and benefits

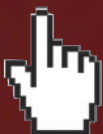
NUMBER CHANGE NOTICE!

RoninGMS has changed contact numbers.

The new numbers are as follows:

TEL: +27 (0) 11 608 3666

FAX: +27 (0) 11 608 4679



This is an active PDF. On this cover you can click the headlines to navigate to the relevant page. You can also click on the QR codes to access the information they contain on your computer. To navigate back to this page simply click the top left hand corner of each page.



THIS IS A QR CODE. DOWNLOAD THE APP FOR YOUR CELL AND SCAN IT TO UNLOCK MORE INFORMATION. VISIT THIS WEB SITE TO FIND OUT MORE: WWW.QRSTUFF.COM

www.roningms.com

Ronin GMS

NEW PACKAGING AND NEW LOOK FOR ARTEMIS UNITS

The Artemis in-bin laser architecture recently underwent a transformation. The units design has been streamlined and the manufacturing process refined to ensure that the unit is completely air tight to avoid fine dust interfering with the electronics and gearing assemblages housed within its rugged but light aluminium casings.

Traditionally Ronin shipped in-bin laser architectures such as our Artemis units in wooden crates but we found this form of packaging difficult to store and to handle. Recently we decided to adopt the Rebul packaging solution due to the many benefits it offered.

The packaging concept was developed by Tony Huggett who now operates Rebul packaging out of Cape Town. The Packaging utilises laminated honeycomb kraft paper which is completely recyclable and requires no fumigation records for international shipping. The boxes are strong and lightweight and can be stacked onto a pallet and shipped as is. Rebul boxes are modular in construction and can easily be customised to any dimension required. The boxes are also very easy to store as they are delivered in flat easily assembled panels that require no tools and they can be disassembled just as easily for storage afterwards.

Ronin is proud to support South African ingenuity and also contribute to preserving our environment. **eS**



Artemis
Laser Scanning System



Ronin



MEASURE UP TO 50 METRES WITHOUT A REFLECTOR!

Jenoptik lasers are especially suitable for industrial applications where distance and speed* measurements are required in a non-contact fashion without reflectors**. Jenoptik laser range finders are ideal for measuring the distance to or from moving and stationary objects. The laser units depicted above offer serial data interfaces, programmable digital switching output, programmable analog output and an external trigger input. These features make Jenoptik laser range finders suitable for a wide range of applications and superbly adaptable to user specific parameters.

* Speed measurements are applicable to LDM301 only. ** Can measure up to 100m with reflectors.

JENOPTIK

WE USE JENOPTIK LASER RANGE FINDERS IN ALL OUR SOLUTIONS

Ronin Grain Management Solutions, Ronin Independent Surveyors and Ronin Argentina has successfully integrated the LDM42 Jenoptik laser range finder into all of their in-bin and bunker architectures and with equal success deployed the laser on mobile AIMS units. At the core of each of these in-bin or bunker architectures (Fixed: ART, single axis: ART+ & multi-axis: ARTEMIS) and the mobile AIMS solution lies Ronin's proprietary software; specifically developed to interpret data gathered with the LDM42 and apply it towards the effective risk management of bulk commodities such as grains, sugar and coal and in the case of AIMS and ARTEMIS generate full 3D stockpile profiles. For more information contact our offices on +27 (0) 11 608 3666 or visit our web site at:

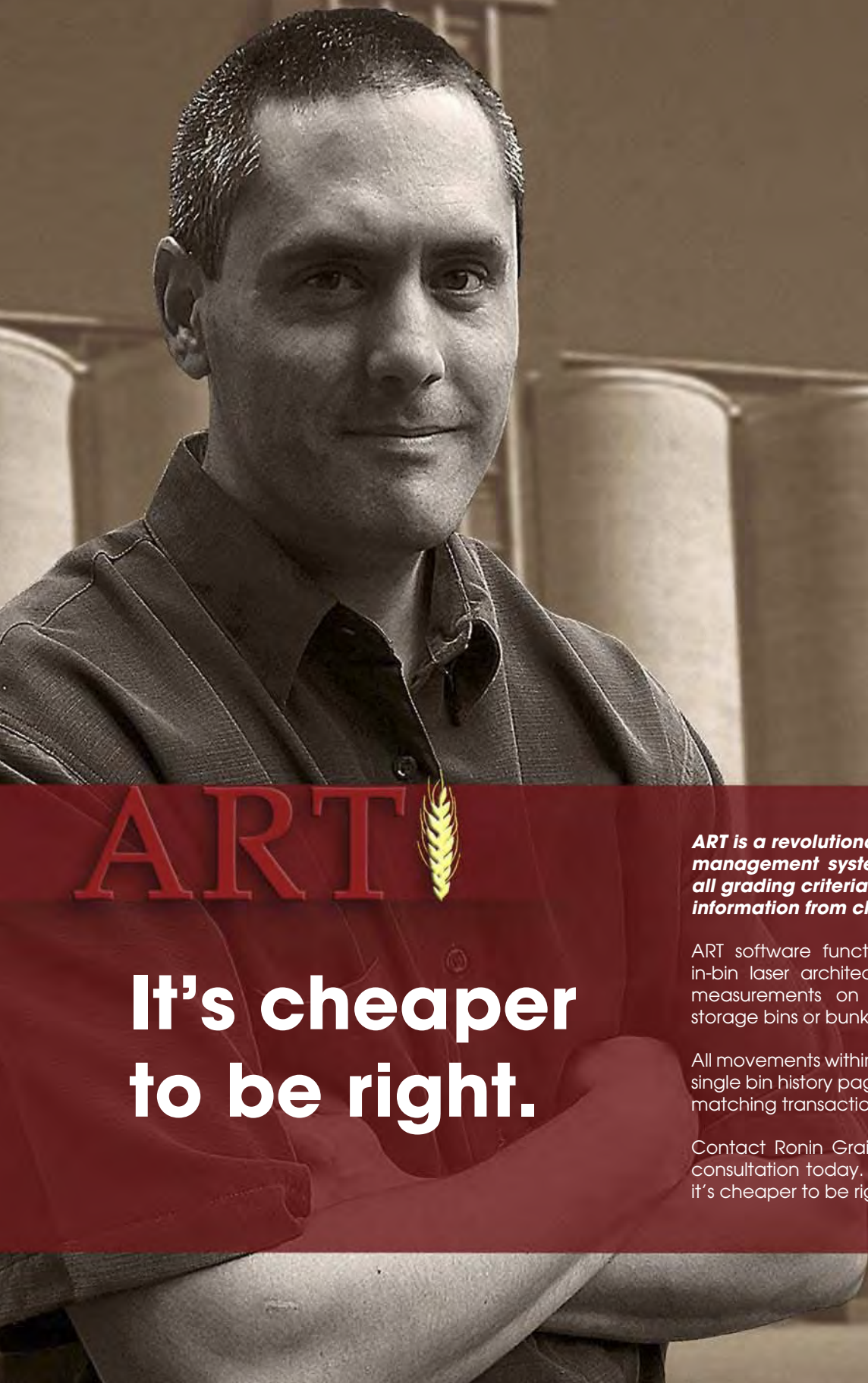
www.roninms.com



Artemis
Laser Scanning System

THE FINE ART OF INVENTORY MANAGEMENT

Ronin
Grain Management Solutions



ART

**It's cheaper
to be right.**

ART is a revolutionary independent stock management system developed to incorporate all grading criteria and daily transactional information from clients into a complete solution.

ART software functions as the front end to an in-bin laser architecture which provide continued measurements on stock levels inside the grain storage bins or bunkers.

All movements within storage bins are recorded on a single bin history page and compared daily with the matching transactions for the relative bin.

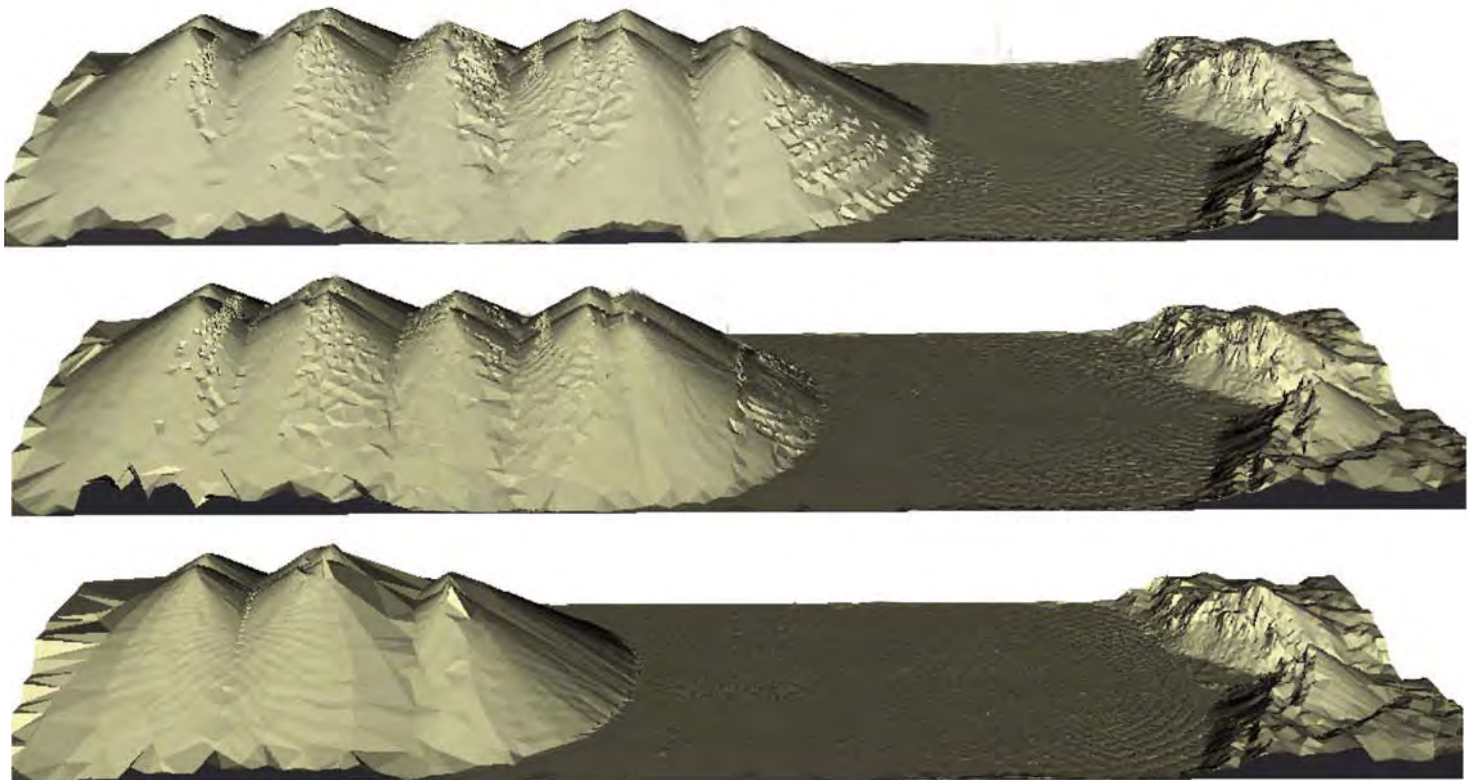
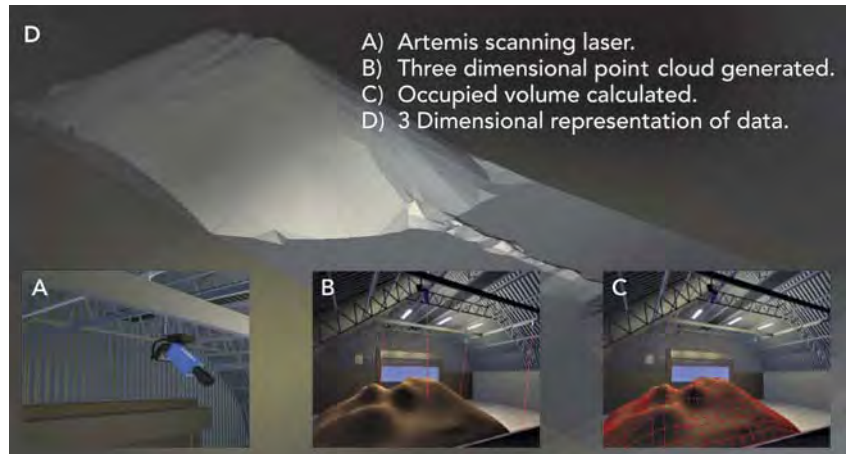
Contact Ronin Grain Management Solutions for a consultation today. Save time and money. Trust us, it's cheaper to be right.



Ronin GMS

SPATIAL IMAGING *The Artemis laser imaging system*

Artemis is a spatial analysis system that delivers **accurate 3 dimensional scans of high volume bulk commodities in storage** within bunkers, bins and warehouses. The genius of **Artemis** is that it does this on a cyclical basis and thus ensures **up to date inventory** that reflects current stock levels daily. The **Artemis Laser Scanning System** is linked to our proprietary **ART software** which records all captured information and regularly updates itself to ensure accurate record of stock and movement. The software runs within a Windows operating environment and allows on-site control and delivers a file sharing network ensuring off-site access to information. The **Artemis Laser Scanning System** utilises a **multi-axis laser architecture** which is capable of generating an extremely accurate point cloud that the **Artemis software** utilises to populate a computer generated 3 dimensional environment. The software integrates the data inherent to this 3 dimensional representation with other input values such as bulk density and recorded volume to generate valuable statistics such as current stock mass and the calculated volumes of stock moved over any given time period. **es**



Above: 3 Artemis scanning cycles recorded at a soya bunker. Not only are stock levels visibly observable but information such as bulk density and recorded volume as well as calculated volumes of stock moved can now be recorded along with other relevant information related to the stock in storage.



INFRARED CCTV CAMERAS



MOTION DETECTORS



SECURITY BEAMS



24 HOUR BATTERY OPERATION



SILENT SMS ALARM



HEAD OFFICE AWARENESS

STOP AFTER-HOURS GRAIN THEFT!

STOP after-hours grain theft with the **Ronin ART-Alarm** Security Solution. **ART-Alarm** is a Robust, reliable and cost effective system designed to operate unobtrusively in all weather conditions. The system was developed to operate independently from external power supply for over 24 hours and utilises infrared cameras and motion sensors placed at key points around the silo to ensure that your grain remains secure. **ART-Alarm** is designed to interface with **Ronin's Art software** and thus offers **head office awareness** of **after-hour movements of grain** and will also send out a silent alarm whenever movement is detected at key points around the silo. Video recorded is instantly viewable online.

Contact Ronin GMS for a quotation and STOP after-hour losses today.



RAIN DAMAGE?



The RVA-Ezi is configured to measure pre-harvest rain damage in wheat and barley. It provides a simple 3-minute objective test for grain soundness at receipt or at the mill. Reports results in cP, SN (Stirring Number) or FNe (Falling Number equivalent).

**PURCHASE THE RVA-EZI BEFORE THE END OF OCTOBER TO QUALIFY FOR A BONUS.
CONTACT US FOR MORE DETAILS**

RVA-Ezi

Ronin GMS

THE doughLAB

Bakers have long tried to reduce the level of art in baking created by the interactions of flour, water and other ingredients under different processing conditions. However, rheology is a complex physical property, and dough rheology is no exception.

The doughLAB is ideal for this application. This high-speed mixer measures the resistance of the dough against constant mechanical shear. It measures the rate of flour hydration, dough development time (peak time), flour mixing tolerance and flour strength. As gluten develops and dough consistency increases, it requires more force to manipulate the dough and this is measured by the doughLAB. Mixing time for optimum dough development is difficult to assess under typical plant conditions, because a number of factors influence it: flour type, dough temperature, mixing speed, level of water absorption, oxidative treatment, enzyme sup-

plementation and more. Flours can differ considerably in their mixing requirements for achieving optimum machineability and finished product attributes.

The doughLAB incorporates programmable mixing speed to study the response of a dough to changing stress and to incorporate ingredients, and high speed/energy mixing to better match the high energy input of modern commercial mixing of bread dough. The temperature can be controlled to measure the heating and gelling characteristics of a dough. The doughLAB includes integrated water dispensing, Windows software to control both testing and analysis, and traceable calibration.

The doughLAB can produce the same results as standard methods, but can also emulate commercial mixing, develop

difficult samples, incorporate ingredients, mix at low energy and increase sample throughput via a 10 minute test.

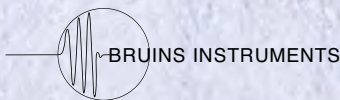
The software's capability to do "Virtual Blending" on up to 60 different flour streams allows the user to maintain a standard using various flour qualities. A great benefit in times of high price and demand.

For more information contact us on +27 (0) 11 608 3666. **es**



THE BEST OF BOTH WORLDS FULL NIT AND NIR (WITH LIMITED PREPARATION) WITH OPTIONAL BULK DENSITY DEVICE

AGRICHECK PLUS



Ronin GMS is the appointed distributors for the following brands in South Africa:



COST EFFECTIVE SOLUTION FOR GRAIN AND SEED ANALYSIS

*Precision NIR analyser for Agriculture, Food,
Chemical and Pharmaceutical Industries.
(Bulk Density Optional)*

The BRUINS AGRICHECK is perfect for whole grain and seed analysis including:

Corn, Soy, Rice, Wheat, Barley, etc.

*Universal calibrations are
available for protein,
moisture, fat, starch,
fibre, gluten
and sedimentation....*



RESEARCH GRADE PRECISION WITH INDUSTRIAL GRADE RELIABILITY

Ronin GMS

THE IMPORTANCE OF QUALITY

A short guide to Lucerne quality and benefits

Lucerne is an extremely valuable plant to the fodder industry. It provides highly nutritious stock feed and with the right growth conditions and careful management can be a highly productive and lucrative crop. Lucerne is grown for its perennial habit, adaptability and ability to survive in dry conditions, as well as its responsiveness to rainfall and irrigation and its role in soil improvement. Lucerne seed production can also be a valuable, sideline enterprise. Lucerne's versatility and resilience allows it to play an important role in farming systems.

Although generally considered a high quality fodder, Lucerne hay quality varies widely depending on the health and growth stage of the Lucerne plants when cut grass or weed contamination and weather damage takes place. How the hay is made and stored also affects quality. The use of best practice management is critical to produce high quality Lucerne hay. High feed quality is important for optimum animal performance. Hay must be extremely palatable, digestible and nutritious to promote high levels of animal intake and growth, as well as having no detrimental factors such as mould. Problems with quality can reduce animal performance and profit. High quality Lucerne hay means different things to different people. The indicative nutritive value of Lucerne hay can be determined subjectively, by considering its colour, texture, smell and composition. Usually high quality Lucerne hay is green, leafy, soft, sweet smelling and pure, without any mould, dust, weeds, and chemical residues or other foreign material. The real nutri-

tive value should be measured objectively through analysis by a laboratory or with a constituent analysis machine such as the Bruins InfraScan. For effective, profitable marketing of hay, producers need to understand the real feed value of their product and the factors that affect it, so that they can match it to the requirements of their own or customers' livestock.

When measuring feed value in the case of Lucerne the major feed quality parameters are protein, energy and digestibility. Neutral detergent fibre (NDF) is also important for ruminants as it influences hay intake. The measure of NDF holds greater importance in the USA. High quality Lucerne hay has higher palatability, digestibility and protein than hay made from many other species. Its high energy level and low fibre also promote high animal intake, rapid digestion and excellent animal production. Traditionally, feed value of hay or silage has been measured by standard chemical digestion tests which are time consuming and expensive. NIR (near infra-red reflectance spectroscopy as offered by InfraScan) analysis is now more commonly used, offering a much quicker, cheaper and accessible method.

THE BENEFITS OF LUCERNE

Adaptability: highly adaptable and can be managed in different ways to produce different products.

Dry matter: produces more dry matter than most other pasture species.

Quality: superior quality feed value for livestock Forage conservation: can be conserved as high quality hay or silage.

Grazing: perennial habit allows it to provide a stable basis for livestock grazing.

Growth: responds to rainfall and irrigation. Can produce opportunistic hay or feed and fill the autumn feed gap.

Seed production: Can produce high yields of high value seed.

Drought resistant: survive dry periods by using moisture from depth and by going dormant. Often the only green feed available during a drought.

Wool production: grass-free Lucerne produces clean wool.

Break crop: provides an excellent break crop for weeds and diseases of cereal and oilseed crops.

Soil fertility: improves soil fertility by fixing nitrogen from the air and adding organic matter.

Soil structure: may improve soil structure, water infiltration and moisture extraction for subsequent crops by increasing organic matter and providing root channels.

Soil stability: can reduce soil erosion by providing year-round ground cover (although it can also result in reduced cover as the soil becomes bare between Lucerne plants).

Soil moisture: can utilise subsoil moisture and rapidly use summer rainfall, so reduces the risk of water logging and soil salinity.

Weed competition: well established Lucerne can inhibit summer weeds through competition for moisture.

Firebreak: lush green Lucerne can be a useful break for bush fires (although dry Lucerne in extreme weather conditions can be flammable). **eS**



DETERMINE LUCERNE QUALITY

Accurately determine the quality of Lucerne with the INFRASCAN, a quality NIR reflectance instrument manufactured by Bruins instruments (Germany) and supplied to the Southern African market by Ronin Grain Management Solutions.

FOR A CONSULTATION CONTACT US TODAY:

Telephone: +27 (0) 11 608-3666 E-Mail: office@roningms.com



Ronin IS

ISO 9001

BUREAU VERITAS
Certification



WWW.RONINIS.COM



LET US BE YOUR CARGO SOLUTION!

Inbound and outbound Cargo solutions:

- **Tally Services** – Documenting the receiving & shipment of cargo.
- **Port Superintendence / Cargo Monitoring** – Ensuring the efficient receiving and shipment of cargo.
- **Cargo Reconciliation** – daily updates, monthly summary and shipment reports.
- **Stock Auditing** – AIMS Laser Audit System
- **Density Verification**
- **Marine Surveying** – hatch inspection, draft surveys to name a few.
- **Quality Inspection** – Site inspections, cargo integrity, container inspections, project cargo & route inspections.
- **Sampling & Analysis** – tailored to customer specifications.
- **Tarping**
- **Cargo screening** – contamination removal services.
- **Ribbed truck cleaning service** (rail wagons)



Santa Shoebox Project

teach your child the joy of giving



Ronin is participating in the Kidz2Kids Santa Shoebox Project this year. Help us bring joy to a child this Christmas. For more info visit www.roningms.com or www.santashoebox.co.za. You can also contact Marni on 011 608 3666 or mail her at marni@roningms.com



THE MARKET LEADING ON-BOARD WEIGHING SYSTEM FOR ALL TYPES OF LOADERS

LOADMASTER 8000i

Ronin
Precision Farming Systems

The RDS Loadmaster 8000i is a highly accurate, dual-sensor on-board weighing system. It is compatible with a number of RDS-approved system enhancements to further extend operational capabilities.



For more information contact RoninPFS at (011) 608-3666.
Fax: (011) 608-2540 e-mail: office@roninpfs.com

WWW.RONINPFS.COM



Ronin PFS

Trimble REPAIR FACILITY



Today, Agriculture demands improved productivity and efficiency. Cutting costs, saving time and ensuring the entire agricultural enterprise is more efficient is the focus that lies at the core of Trimble and RoninPFS's service cultures.

In line with this culture of excellence RoninPFS has taken the steps necessary to establish a fully underwritten Trimble repair facility on African soil. In the past repairs were done in Germany and this added not only extra cost but extra time to the repair budget. With the repair facility now situated in Johannesburg and staffed by technicians trained by Trimble at Geo Concepts in Germany, RoninPFS can now offer repair services on Trimble agricultural systems as well as honour existing warranties.

RoninPFS is an authorised agent for Trimble Agriculture.

Contact us today for a quote. Tel: +27 (0) 11 608 3666.

E-mail: info@roninpfs.com Web: www.roninpfs.com



FmX Skerm.
Geïntegreerde skerm vir
meerdere applikasies



Ceres 8000i.
Bekostigbare opbrengs
moniteering



Trimble CFX-750.
Die nuutste skerm van
Trimble met Lightbar



PM300/PM300E.
Die volgende generasie
van planter moniteering

**RUIL VIR RUIL DICKEY-JOHN
PM1000/3000 VIR
AFSLAG OP PM300E**

**GEBRUIK JOU BESTAANDE JOHN DEERE
GS2/GS3 SKERM OM VARIASIE TOEDIENING
MET KALK STROOIERS TE DOEN . . .
KONTAK ONS OM UIT TE VIND HOE.**

ONS VERSKAF RTK NETWERKE IN SUID AFRIKA

RoninPFS is 'n progresiewe maatskappy wat presisie boerdery sisteme aan die Suider Afrikaanse mark voorsien. RoninPFS is die afgevaardigde handelaar van Trimble, Dickey-John, Farmworks, Weedseeker, Greenseeker en RDS in Suid Afrika. Ons bied met trots slegs die beste gehalte produkte en dienste om jou boerdery die voordeel te bied. Vir meer informasie besoek asseblief ons webtuiste by

www.roninpfs.com of kontak ons:

Tel: +27(0)11 608 3666 Faks: +27(0)11 608 2540 E-pos: office@roninpfs.com

