

Branscan offers an online system for the identification of aleurone and bran in flour products. To date, Branscan have installed over 100 systems worldwide and operate 22 distributors over all five continents.

Fluorscan AshCheck was designed to give millers accurate ASH measurements quickly and consistently. The system determines the percentages and speck counts of both aleurone and pericarp (Bran) as well as giving the user accurate and repeatable ash values.



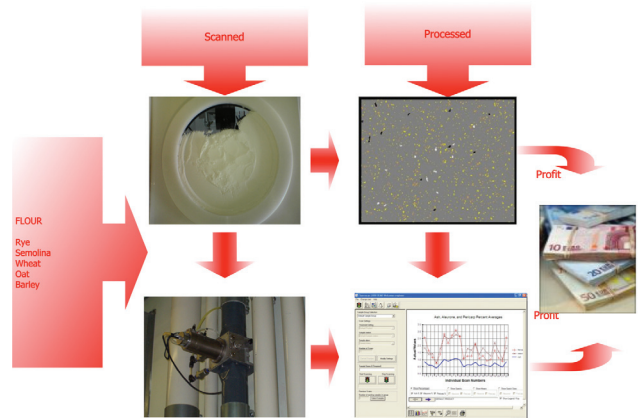
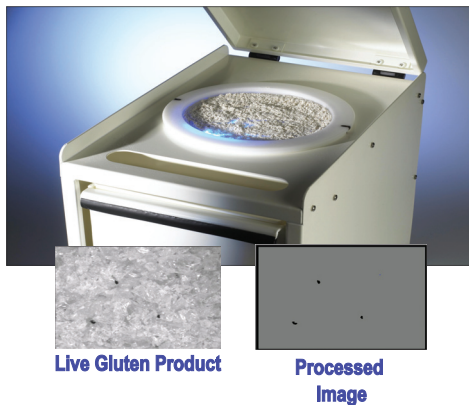
## Saving you time and increasing you profit

### F2000 Facts:

- A quick, analytical, non destructive and repeatable test, replacing the furnace, muffle or visual inspection tests.
- Already adopted by major international organisations in the milling, baking and food industries.
- Meets laboratory test criteria and assists in the compliance of ISO9001:2000.
- Rapid analytical process, obtaining results in 90 to 120 seconds from a given sample, compared to traditional tests taking anything from 3 to 9 hours.
- Portable system weighing 12.5 kg ensuring results can be obtained anywhere they are needed.
- Quickly and easily installed with no need for specialist engineers or sophisticated PC.

### Uses Proven Image Processing Technology

Fluorscan is based on well-established and proven image processing technology which has been used successfully within major manufacturers worldwide for nearly a decade.



- Specially developed algorithm and lighting system means daily calibration is not required.
- Live image and processed image displayed on the screen allowing the user to see the sample analysed instantly.
- All data can be archived and exported.
- Ability to measure number and percentage of aleurone and bran (yellow and brown specks), and report on ash value.
- Configurable to give measurements that operatives recognise and understand.
- Access codes can be employed to comply with regulations for equipment accessibility.

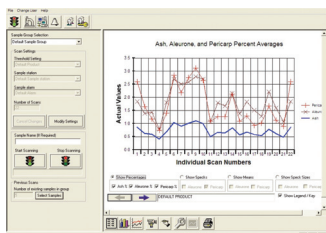
### Covers a wide range of applications

Aleurone and bran are the determining factor of the final appearance, grade and purity of the product and ultimately the final selling price. In some cases impurities can result in the rejection of whole batches.

Fluorscan can be used to rapidly scan a wide variety of products such as:

The Fluorscan F2000 online system uses UV light to pick up the yellow specks of fluorescent aleurone and the dark specks of bran in flour products such as:

- Semolina
- Rye
- Wheat
- Oat
- Barley



Data can be displayed by the Fluorscan software as both aleurone and bran counts and speck percentages, as well as further data such as graphs.

**YOUR SUPPLIER:**

**Ronn**  
Grain Management Solutions

25 High Street, P.O. Box 556, Modderfontein, 1645  
Tel: +27 (0)11 606 2194 Fax: +27 (0)11 606 3189  
Mail: office@roningms.com  
Web: www.roningms.com