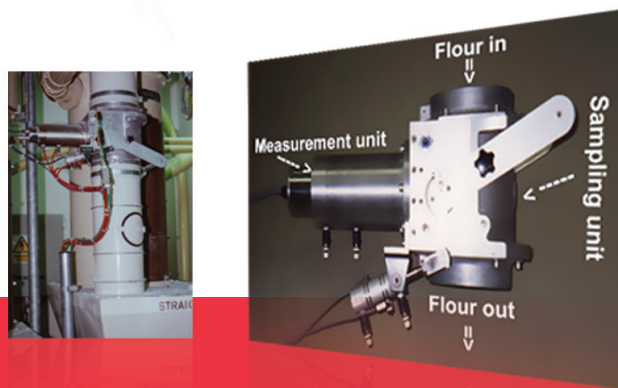




Powderscan P4000 Online

The P4000 was designed to give millers accurate ASH measurements quickly and consistently. The system determines the percentages and speck counts of both aleurone and pericarp (Bran) as well as giving the user accurate and repeatable ash values on-line. This online system is perfect for the identification of impurities in powder products. To date, Branscan have installed over 100 systems worldwide and operate 22 distributors over all five continents.



Saving you time and increasing your profit

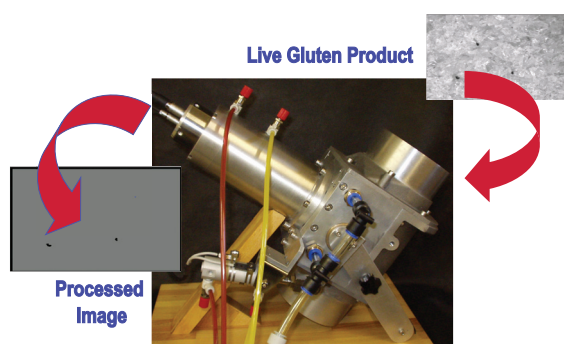
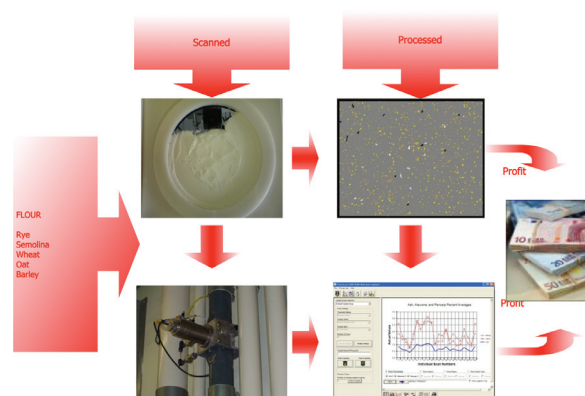
Profit and quality are key for the success of any organisation. Powderscan is the first system to replace subjective testing in laboratories and manufacturing plants where error margins for contamination differ from one person to another.

F4000 Facts:

- Already adopted by major international organisations in the chemical, pharmaceutical, personal healthcare and food industries.
- Configurable to operate 4 pneumatically activated measuring heads connected to individual control stations through one pc.
- Built in alarms configurable to suit individual customer requirements
- Screen can be remotely located
- Meets laboratory test criteria and assists in the compliance of ISO9001:2000
- Rapid analytical process, obtaining results in real-time.
- Can be used in lights-out processing operation where plant functions in 24/7 environment.
- Electrical power located in its own independent control panel rated to IP66/67.
- Configurable for use in ATEX Zones 21 and 22.

Uses Proven Image Processing Technology

Powderscan is based on well-established and proven image processing technology which has been used successfully within major manufacturers worldwide for nearly a decade.



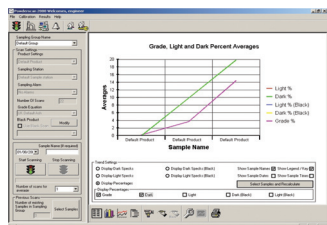
- Specially developed algorithm and lighting system means daily calibration is not required.
- Live image and processed image displayed on the screen allowing the user to see the sample analysis in real-time.
- All data can be archived and exported.
- Capable of scanning up to 5 separate criteria at once.
- Ability to measure number and percentage of contaminants.
- Configurable to give measurements that customers recognise and understand.
- Access codes can be employed to comply with regulations for equipment accessibility, in accordance with FDA guidelines.

Covers a wide range of applications

Contamination is the determining factor of the final appearance, grade and purity of the product and ultimately the final selling price. In some cases contamination can result in the rejection of whole batches.

Powderscan can be used to rapidly scan a wide variety of products such as:

- Casein
- Chemicals Bead
- Chemical Powder
- Gelatine
- Gluten
- Milk Powder
- Starch
- Semolina
- Whey Powder



Data can be displayed on the Powderscan software as both speck counts and speck percentages.

YOUR SUPPLIER:



25 High Street, P.O. Box 556, Modderfontein, 1645
 Tel: +27 (0)11 606 2194 Fax: +27 (0)11 606 3189
 Mail: office@roningms.com
 Web: www.roningms.com



Powderscan P2000

PowderScan P2000 offers manufacturers of powder products the ability to monitor quality ON-LINE giving a quick, analytical, non destructive and repeatable test, replacing filter or visual inspection.

The P2000 is ideal for the identification of impurities in slurry, gel and powder products. To date, Branscan have installed over 100 systems worldwide and operate 22 distributors over all five continents.



Saving you time and increasing you profit

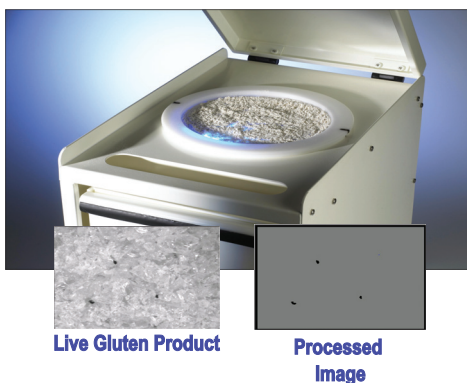
Profit and quality are key for the success of any organisation. Powderscan is the first system to replace subjective testing in laboratories and manufacturing plants where error margins for contamination differ from one person to another.

F2000 Facts:

- A quick, analytical, non destructive and repeatable test, replacing the furnace, muffler or visual inspection tests.
- Already adopted by major international organisations in the milling, baking and food industries.
- Meets laboratory test criteria and assists in the compliance of ISO9001:2000.
- Rapid analytical process, obtaining results in 90 to 120 seconds from a given sample, compared to traditional tests taking anything from 3 to 9 hours.
- Portable system weighing 12.5 kg ensuring results can be obtained anywhere they are needed.
- Quickly and easily installed with no need for specialist engineers or sophisticated PC.

Uses Proven Image Processing Technology

Powderscan is based on well-established and proven image processing technology which has been used successfully within major manufacturers worldwide for nearly a decade.



- Specially developed algorithm and lighting system means daily calibration is not required.
- Live image and processed image displayed on the screen allowing the user to see the sample analysed instantly.
- All data can be archived and exported.
- Ability to measure number and percentage of aleurone and bran (yellow and brown specks), and report on ash value.
- Configurable to give measurements that operatives recognise and understand.
- Access codes can be employed to comply with regulations for equipment accessibility.

Covers a wide range of applications

Powderscan can be used to rapidly scan a wide variety of products such as:

- Casein
- Chemicals Bead
- Chemical Powder
- Gelatine
- Gluten
- Milk Powder
- Starch
- Semolina
- Whey Powder

Data can be displayed on the Powderscan software as both speck counts and speck percentages.

YOUR SUPPLIER:

Ronin
Grain Management Solutions

25 High Street, P.O. Box 556, Modderfontein, 1645
Tel: +27 (0)11 606 2194 Fax: +27 (0)11 606 3189
Mail: office@roningms.com
Web: www.roningms.com

BRANSCAN
LIMITED