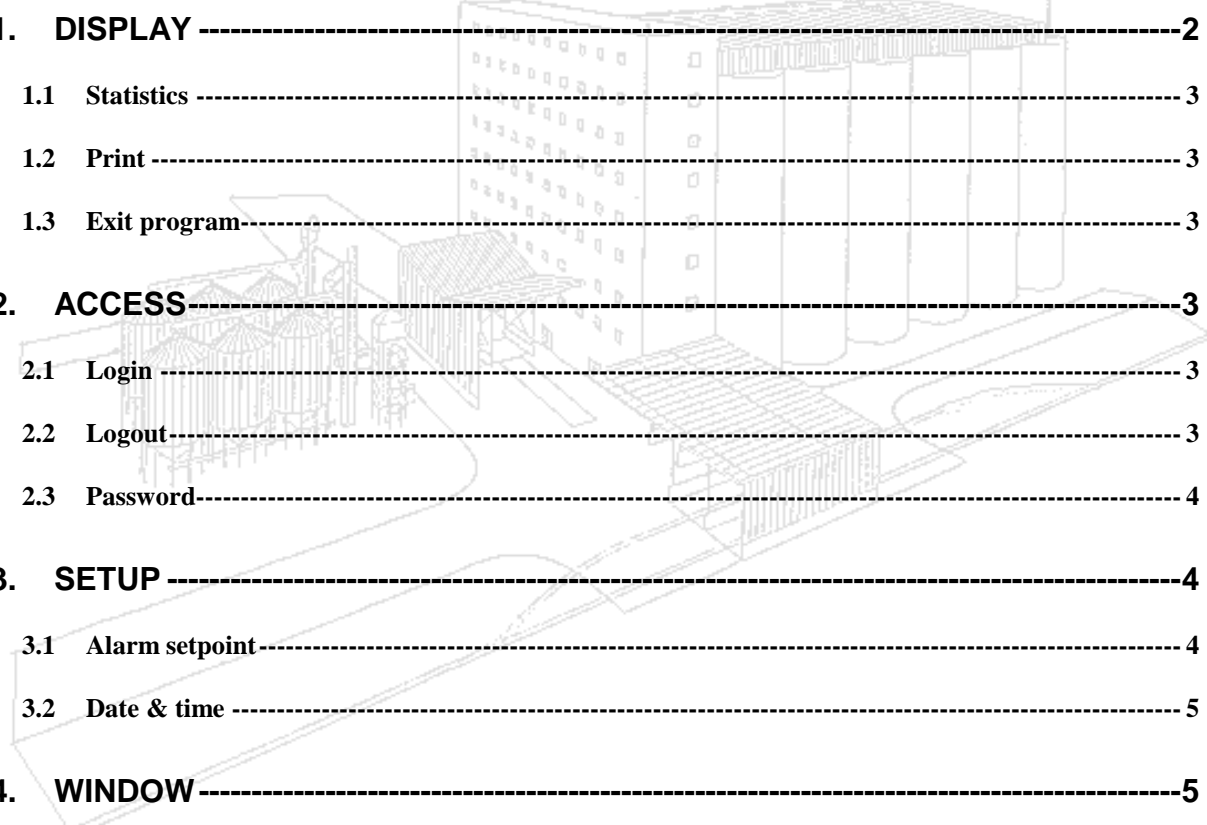


Unitest[®] 3000W

Instruction

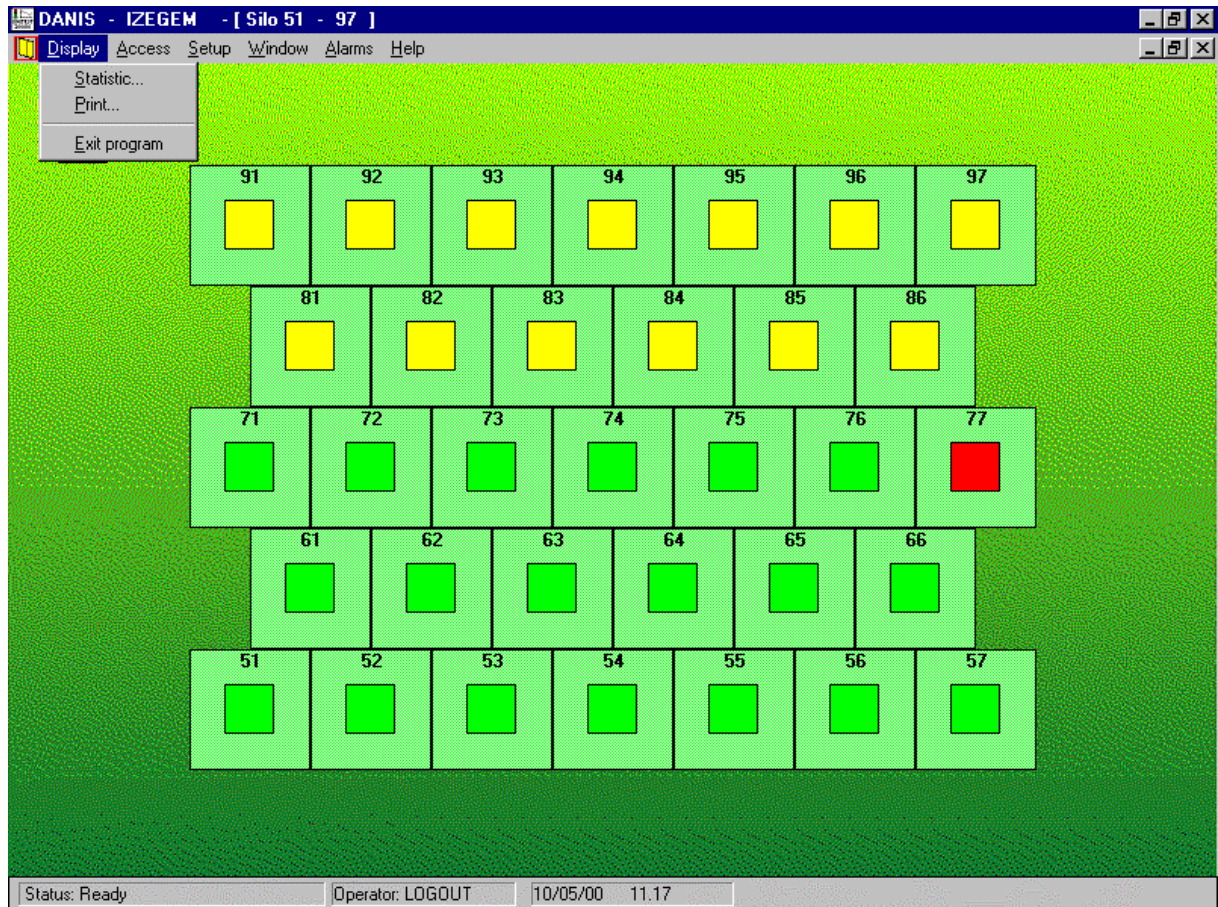
GB



1. DISPLAY	2
1.1 Statistics	3
1.2 Print	3
1.3 Exit program	3
2. ACCESS	3
2.1 Login	3
2.2 Logout	3
2.3 Password	4
3. SETUP	4
3.1 Alarm setpoint	4
3.2 Date & time	5
4. WINDOW	5
5. ALARMS	5
6. HELP	6

1. Display

In the menu **Display** you can choose between three commands as shown beneath. The individual menu items will be elaborated on.

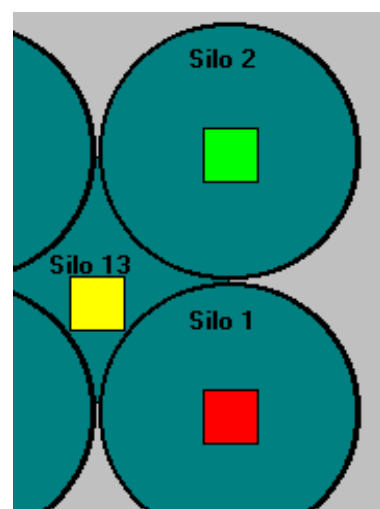


The status square for the silo can assume 3 colours, which each indicates a condition.

Green indicates the communication with all the address boards in the silo and that there are no alarms.

Red indicates an alarm in the silo.

Yellow indicates that there is no communication with one or more address boards.



1.1 Statistics

When statistics is selected you can choose in which silo you wish to see the temperatures. If there are several cables in one silo, you have to select which cable to see. The last item to select is the period during which you wish to see the temperatures. This covers 24 hours, a week, two weeks or a month.

1.2 Print

When this item is selected you have the possibility of choosing between different prints. This could be a print of all current temperatures or temperatures saved in the database. Likewise, it is here possible to select the elaboration of a daily report, and for which silos the print is desired.

1.3 Exit program

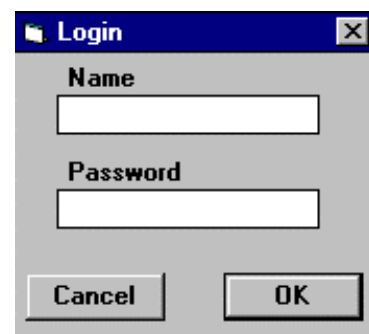
Select this command in order to end the main program. This is the only place where the program can be normally stopped. The Windows 95 mark in top of the right corner is not functioning. Likewise, the user can be deprived of the right to end the program if the rights are changed in the Access menu. See below here.

2. Access



2.1 Login

As a standard, the user **Logout** is selected when the programme is started. This user has all the rights when the programme is delivered. The customer can himself set up more users with different rights, if desired. **Login** is used when you wish to log in as another user than **Logout**. Name and password must be entered.



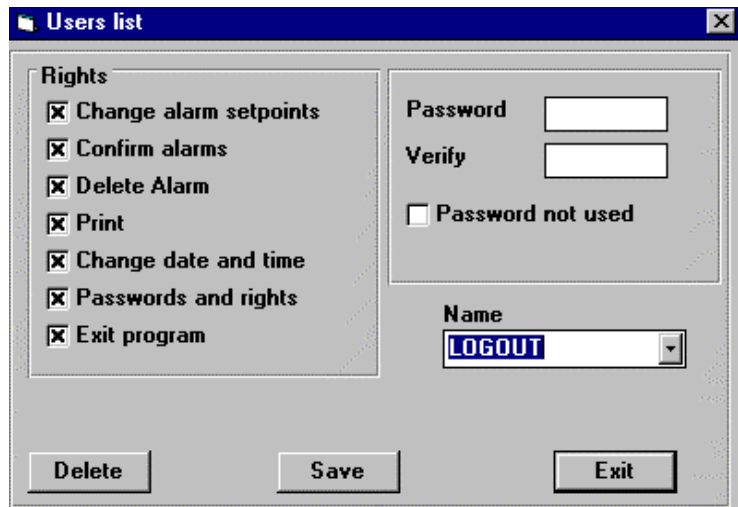
2.2 Logout

Is selected when you wish to log in as **Logout**.

2.3 Password

This menu is selected in order to set up more users or to correct the right of the present users.

BE CAREFUL not to remove all rights of the users. Then you will not be able to quit the program and enter the program again to correct the rights.



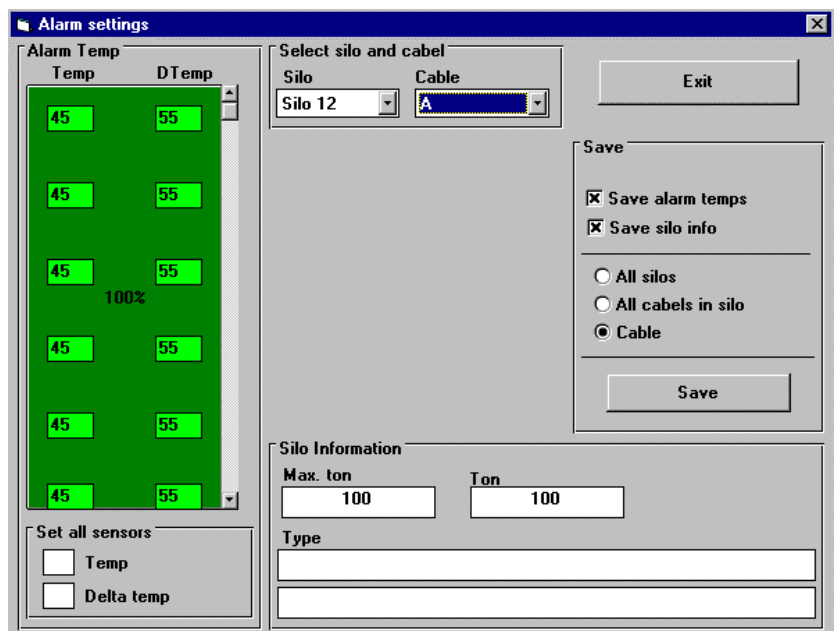
3. Setup



3.1 Alarm setpoint

The alarm setting menu is used for changes of the alarm setpoints for each sensor, cable, all cables in a bin or all cables in the entire plant.

Also, it is possible to put in information of the maximum contents of the silo and its current contents. Moreover, there are two lines available for comments or information on the silo contents. The operator can freely choose what information to provide.



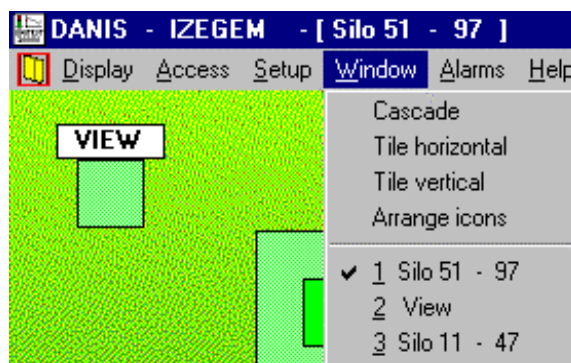
3.2 Date & time

The program is designed for Windows 3.1 and Windows 3.11. If date and time is selected on computers with these systems it is possible to change date and time. If Windows 95 or Windows 98 is used, this menu will not be active. Date and time can then be set in one way of many in Windows 95 or Windows 98.

4. Window

This command is a standard Windows command, and it is referred to the Windows manual that came with the system.

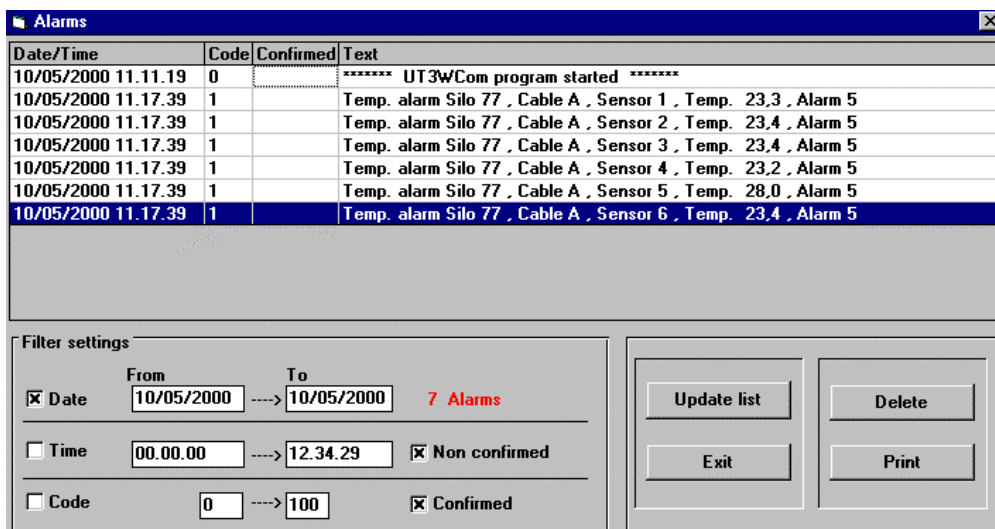
In case the Unitest system is larger than one Window, it will in the Windows commands be possible to switch to the silo picture you wish to see without using the jumping buttons in the Unitest program.



5. Alarms

If the alarm menu is selected you get a list of generated alarms.

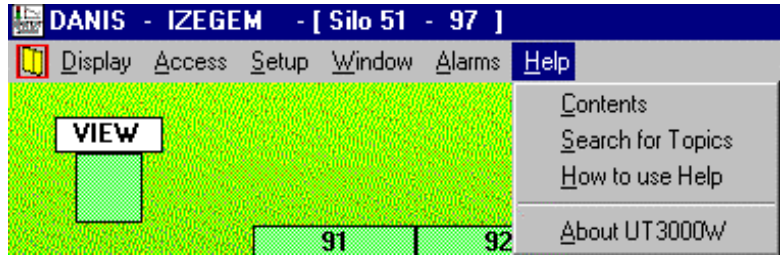
Normally the list is on max. 500 lines. By more alarms than the 500 the elder alarms are erased.



Different filter functions can be selected if you wish a more detailed search for various alarm types. The user has the possibility of printing the list, if a printer is connected to the system. The user can confirm alarms and there is a possibility of erasing the alarms.

6. Help

This written instruction provides the user with help to operate the system. The various menu items are studied and the item **About Unitest 3000W** might appear as shown below here.



This piece of information might be a help to **Cimbria Unigrain A/S** in case any problems with the system should occur. This gives some information of the program version, and so on.

